



9505 Midwest Ave.
Cleveland, OH 44125

(216) 220-1800 ph.
(216) 220-1801 fax

Fluid Power Service Worksheet

Date:

Time:

Company:

Contact:

Parts needed by:

Job #:

Phone:

Fax:

Application:

Fluid:

Hydraulic Oil

Water/Glycol

Air

Water/Emulsion

Synthetic Ester

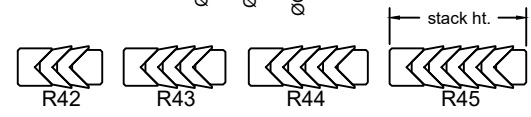
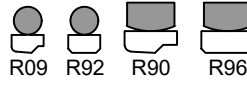
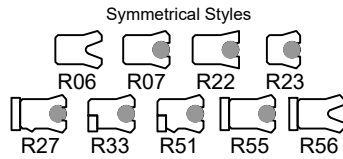
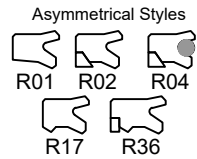
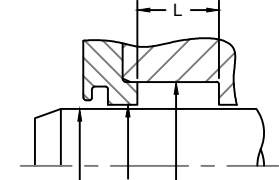
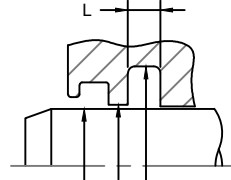
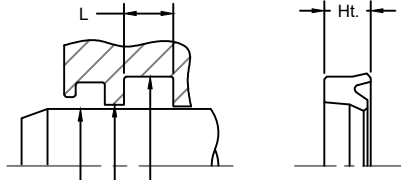
Temp:

Pressure:

Speed:

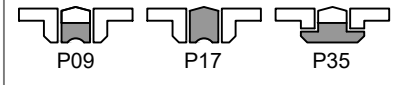
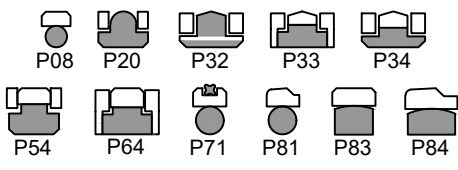
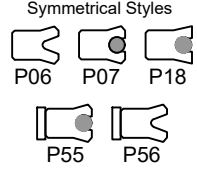
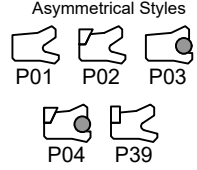
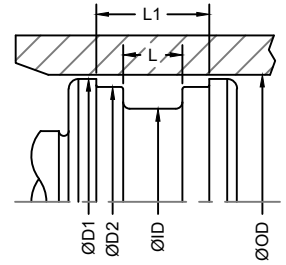
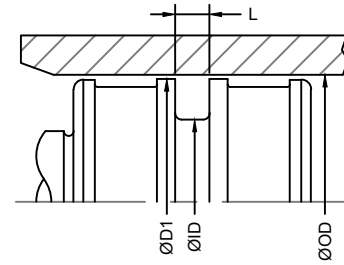
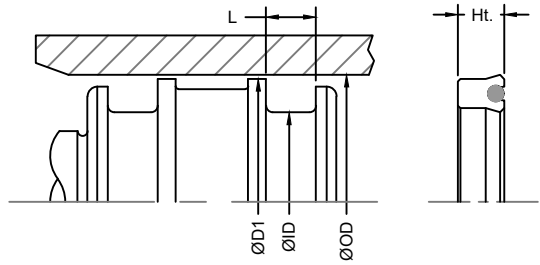
Stroke:

Rod Seals



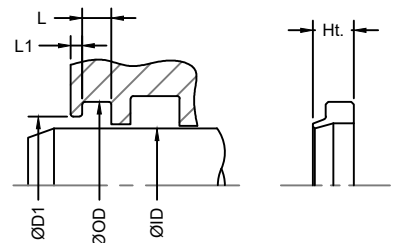
ØID: ØOD: ØD1: L: Ht: Profile: Material:

Piston Seals

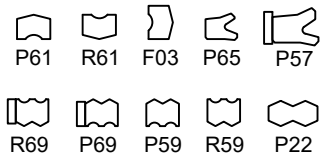


ØID: ØOD: ØD1: L: Ht: Profile: Material: L1: ØD2:

Wipers



Static Seals:



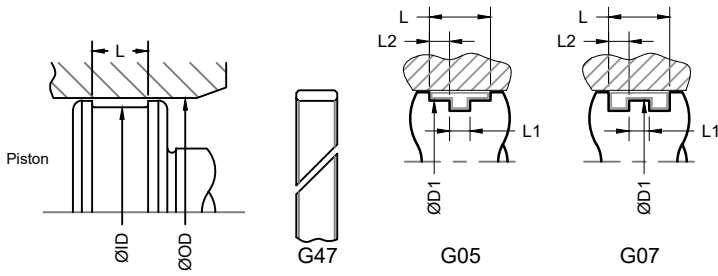
Notes:



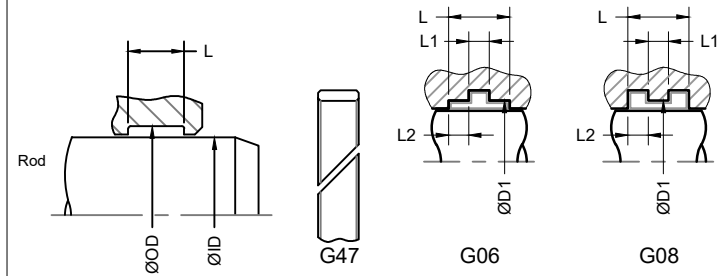
Mat'l: ØID: Ht: ØOD: ØD1: L:

ØID: ØOD: ØD1: L1: L:

Piston Guide Bands



Rod Guide Bands



L1: L2: ØD1: Mat'l: ØID: ØOD: L: Profile:

L1: L2: ØD1: Mat'l: ØID: ØOD: L: Profile: