



9505 Midwest Ave.
Cleveland, OH 44125

(216) 220-1800 ph.
(216) 220-1801 fax

Seal Worksheet

Date:

Time:

Company:

Contact:

Parts needed by:

Job #:

Phone:

Fax:

Application:

Fluid:

Hydraulic Oil

Water/Glycol

Air

Water/Emulsion

Synthetic Ester

Temperature:

Pressure:

<1500psi

<3000psi

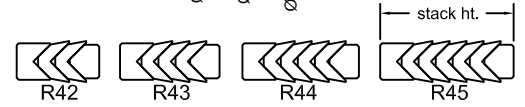
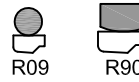
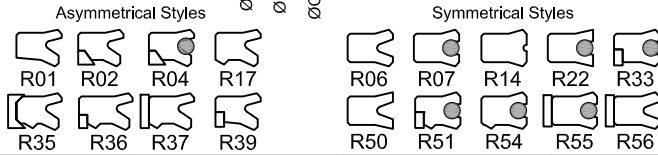
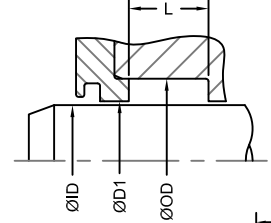
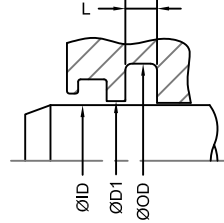
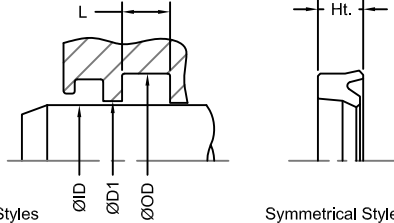
<4500psi

<6000psi

Speed:

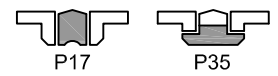
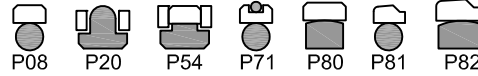
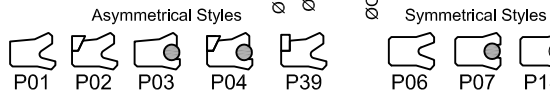
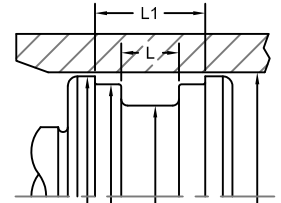
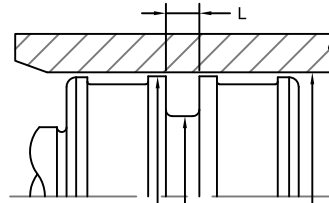
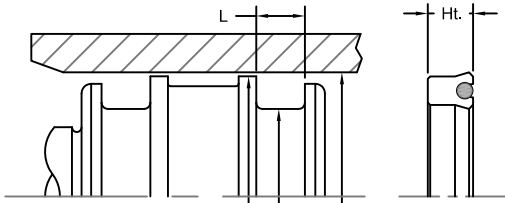
Stroke:

Rod Seals



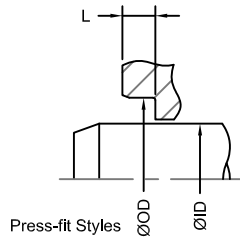
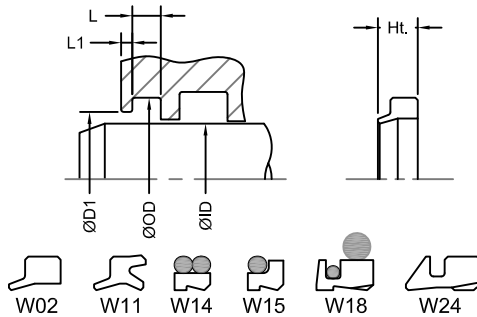
ØID: ØOD: ØD1: L: Ht: Profile: Material:

Piston Seals

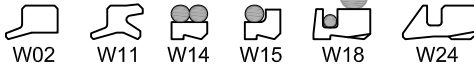


ØID: ØOD: ØD1: L: Ht: Profile: Material:

Wipers



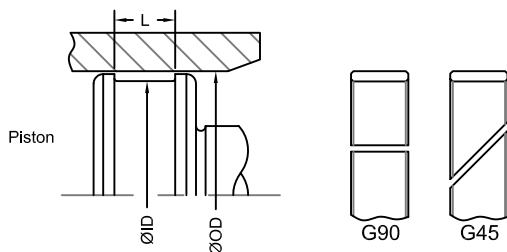
Notes:



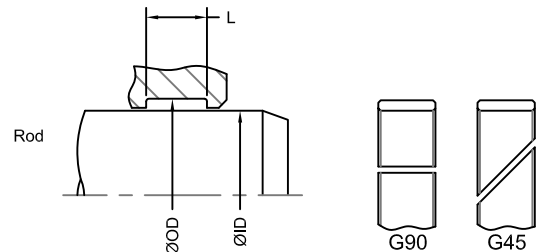
Mat'l:

ØID: ØOD: ØD1: L: Profile:

Piston Guide Bands



Rod Guide Bands



Mat'l:

Mat'l:

ØID: ØOD: L: Profile: ØID: ØOD: L: Profile: