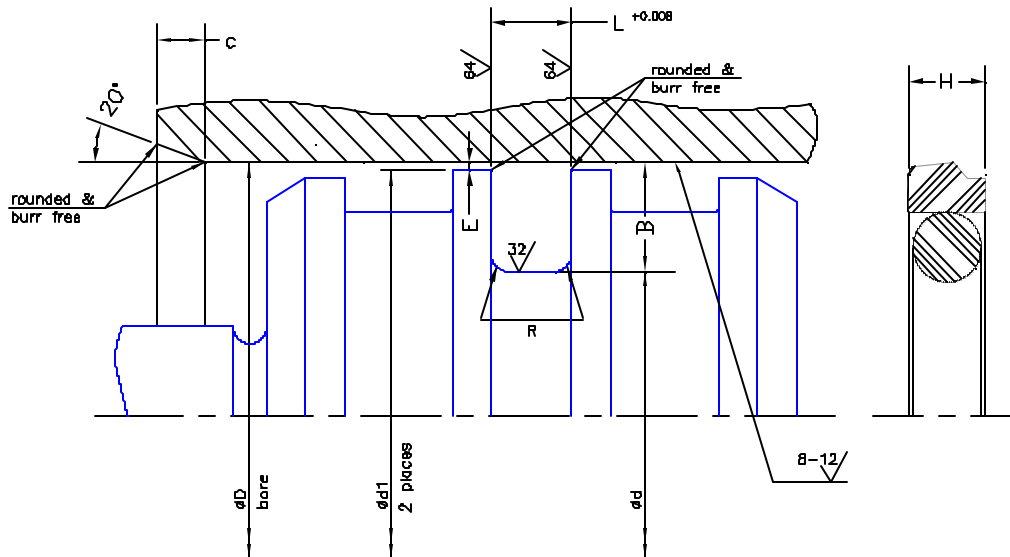
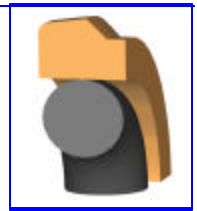


# Standard Duty Piston Seal

## Hardware Specifications

### Type: 281 Series



	B	L	H	d1 <3000psi	d1 <6000psi	R typical
series1	0.096	0.087	0.079	D - 0.016	D - 0.012	0.012
series2	0.148	0.126	0.118	D - 0.020	D - 0.012	0.020
series3	0.217	0.165	0.157	D - 0.020	D - 0.016	0.032
series4	0.305	0.248	0.232	D - 0.020	D - 0.016	0.047
series5	0.413	0.319	0.303	D - 0.024	D - 0.020	0.079
series6	0.482	0.319	0.303	D - 0.024	D - 0.020	0.079
series7	0.551	0.374	0.354	D - 0.024	D - 0.020	0.079

D	C
<1.6	0.160
1.6 < 3.15	0.240
3.15 < 5.25	0.320
5.25 < 13.0	0.390
13.0 < 26.38	0.470
26.38 < 37.38	0.550

Lead-in Chamfers

The extrusion gap "E" is suitable for pressure up to 6000psi and temperatures up to 175 Deg F. For higher pressures or temperatures please consult with us prior to finalizing your design.

### Operating Conditions:

The operating conditions listed are based on our standard PTFE/Bz material and NBR energizer. Other materials are available for special applications. In certain applications pressure rating can be increased with adjustment of extrusion gap E.

Pressure	6000psi ( 400 bar )	
Speed	16.5 ft/sec ( 5 m/s )	
Media - Temp compatibility	Min (F)	Max (F)
Hydraulic oil	-38	250
Water based Emulsions	40	140
Water Glycol	-38	140
Water	40	210
Polyol Ester	-38	175